

AluLet LSPO Elevator

Low Speed Platform Outdoor Datasheet

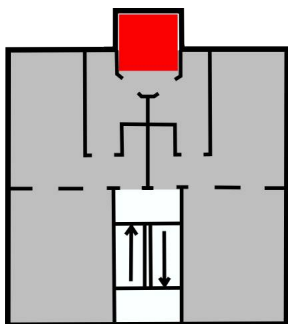
AluLet LSPO is a platform lift in its own self-supporting shaft made to be installed in existing storey buildings where an elevator solution is needed.

The cabin is an open platform, operation is done by impulse pressure from the floors and holding pressure from the cabin. It can fit in very tight installation dimensions.

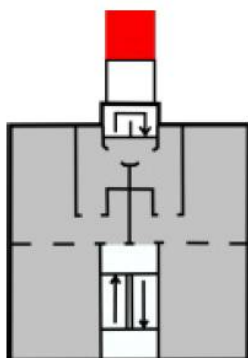
The platform lift is made to be able to stand outdoors and can for example be placed as freestanding, up to a balcony or with your own repos



INSTALLATION EXAMPLES



*Up to existing balconies /
hallways*



*With own repos or direct
entry to building*

WE GUARANTEE

- ✓ **HIGH QUALITY THAT PAYS OFF IN THE LONG RUN**
We have the quality, it has been proven with many years in the market as well as the lifespan of our products which makes it good business to invest in quality.
- ✓ **CUSTOMIZED SOLUTIONS**
We customize solutions to consultant's, contractor's or client's wishes to achieve the greatest satisfaction with the final product.
- ✓ **CLOSE CONTACT & COMPETENT SUPPORT**
We maintain close contact with the customer throughout the process, so that you get the right solution installed in the best way.
- ✓ **A TRUSTWORTHY PARTNER WITH EXPERIENCE**
We are the only Danish manufacturer of lifts and we believe that is because we have always delivered value for the investment.
- ✓ **SOLUTIONS THAT WITHSTAND THE TEST OF TIME**
Our lifts last for the Nordic climate so avoid problems, our products - they last for a long time.

AluLet LSPO Elevator

Low Speed Platform Outdoor
Datasheet

TECHNICAL SPECIFICATIONS

Max. Lifting height:
30 m

Max. cargo:
400 kg

Max. speed:
0.15 m/s

Engine power:
1.5 kW

Energy requirement:
VDI 4707

Communication system:
ASI-bus

Surface:
Natural anodized aluminium

Pit depth:
70 mm (for level-free access)

Pit length and width:
Outer shaft dimension + 40 mm

Placement:
Outdoors

Min. ceiling height at lower loading point:
2150 mm

Min. ceiling height at upper loading point:
2400mm (2450 mm during assembly).

Weight including shaft:
800 kg + 200 kg x lifting height [m]

Shaft clathing:
Aluminium or glass feilds (1 meter feilds)

Electrical connection:
3 x 400V + 0 + J, insured 25 Amp

RCD:
PFI class A/B (300 mA)
(3 phase frequency range possible no N)
(recommendation of the electricity council)

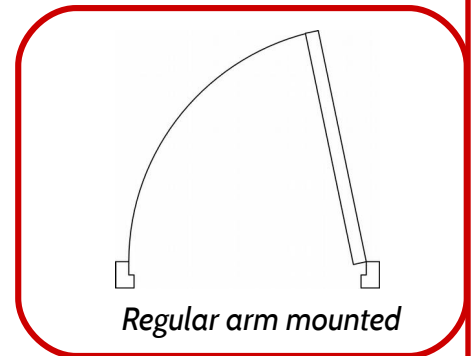
Approval type:
2006/42/EF Machine Directive.
(cert.nr TI-10-MD-0411)

Alarm:
2-way monitored elevator alarm
(PSTN phone line or SIM card)

Safety inspection:
Min. 4 times a year (statutory)
(May vary according to notice.)



DOOR TYPES



SHAFT SIZES & TYPES

Type:	Shaft: (mm)	Cabin: (mm)	Doorway: (mm)	Auto doors:	Note:
B	1210 x 1246	1000 x 1125	850	Optional	
C	1310 x 1615	1100 x 1500	950	Optional	Type II'
I	1310 x 2515	1100 x 2400	950	Optional	Stretcher elevator ²

¹⁾ Cabin dimension as a Type II elevator with closed chair doors. ²⁾ Stretcher elevator according to SBI-Anv. 230.