

# AluLet LSPI Elevator

## Low Speed Platform Indoor Datasheet

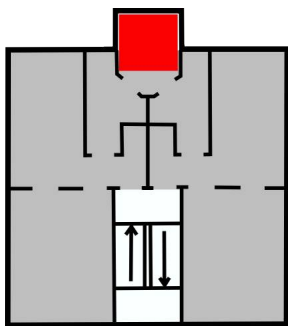
AluLet LSPI is a platform lift in its own self-supporting shaft made to be installed in existing storey building, where there is a need for an elevator solution.

The cabin is an open platform, operated by impulse pressure from the floors and holding pressure from the cabin, and it can be installed in very narrow installation dimension.

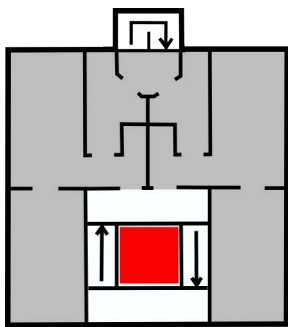
The platform lift can for example be placed, as freestanding, in the stairwell's free space or as a replacement for the rear staircase.



### INSTALLATION EXAMPLES



*Replacement of back stairway*



*In the durchsicht of the front stairs*

### WE GUARANTEE

- ✓ **HIGH QUALITY THAT PAYS OFF IN THE LONG RUN**  
We have the quality, it has been proven with many years in the market as well as the lifespan of our products which makes it good business to invest in quality.
- ✓ **CUSTOMIZED SOLUTIONS**  
We customize solutions to consultant's, contractor's or client's wishes to achieve the greatest satisfaction with the final product.
- ✓ **CLOSE CONTACT & COMPETENT SUPPORT**  
We maintain close contact with the customer throughout the process, so that you get the right solution installed in the best way.
- ✓ **A TRUSTWORTHY PARTNER WITH EXPERIENCE**  
We are the only Danish manufacturer of lifts and we believe that is because we have always delivered value for the investment.
- ✓ **SOLUTIONS THAT WITHSTAND THE TEST OF TIME**  
Our lifts last for the Nordic climate so avoid problems, our products - they last for a long time.

# AluLet LSPI Elevator

Low Speed Platform Indoor  
Datasheet

## TECHNICAL SPECIFICATIONS

**Max. Lifting height:**  
30 m

**Max. cargo:**  
400 kg

**Max. speed:**  
0.15 m/s

**Engine power:**  
1.5 kW

**Energy requirement:**  
VDI4707

**Communication system:**  
ASI-bus

**Surface:**  
Powder coated in RAL9010

**Pit depth:**  
70 mm ( for level-free access)

**Pit length and width:**  
Outer shaft dimension + 40 mm

**Placement:**  
Indoors

**Min. ceiling height at lower loading point:**  
2150 mm

**Min. ceiling height at upper loading point:**  
2400mm (2450 mm durring assembly).

**Weight including shaft:**  
800 kg + 200 kg x lifting height [m]

**Shaft clathing:**  
Aluminium or glass feilds (1 meter feilds)

**Electrical connection:**  
3 x 400V + 0 + J, insured 25 Amp

**RCD:**  
PFI class A/B (300 mA)  
(3 phase frequency range possible no N)  
(recommendation of the electricity council)

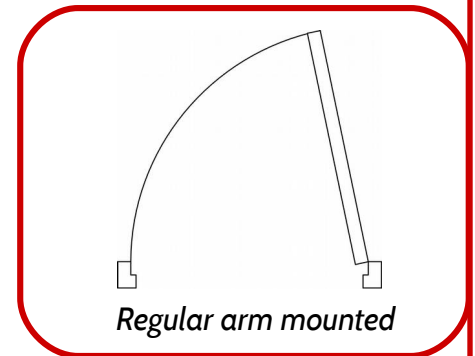
**Approval type:**  
2006/42/EF Machine Directive.  
(cert.nr TI-10-MD-0411)

**Alarm:**  
2-way monitored elevator alarm  
(PSTN phone line or SIM card)

**Safety inspection:**  
Min. 4 times a year (statutory)  
(May vary according to notice.)



## DOOR TYPES



## SHAFT SIZES & TYPES

Type:	Shaft: (mm)	Cabin: (mm)	Doorway: (mm)	Auto doors:	Note:
A	1210 x 1615	1000 x 1500	850	Optional	Standard
B	1210 x 1246	1000 x 1125	850	Optional	
C	1310 x 1615	1100 x 1500	950	Optional	Type II'
D	1070 x 1615	860 x 1500	750	Optional	
E	1070 x 1246	860 x 1125	750	Optional	
F	970 x 1615	760 x 1400	650	Optional	
G	970 x 1246	760 x 1500	650	Optional	
H	1310 x 1815	1100 x 1700	950	Optional	
I	1310 x 2515	1100 x 2400	950	Optional	Stretcher elevator <sup>2</sup>

<sup>1)</sup> Cabin dimensions as a Type II elevator with closed cabin doors. <sup>2)</sup> Stretcher elevator according to SBI-Anv. 230.

(+45) 48 36 54 00

info@hydro-con.dk

www.hydro-con.dk