

AluLet LSCO Elevator

Low Speed Cabin Outdoor
Datasheet

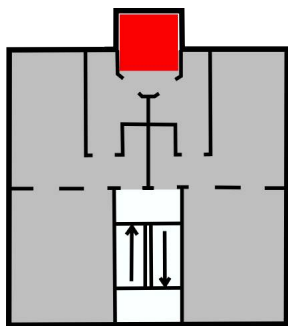
AluLet LSCO is an elevator lift with its own self-supporting shaft made to be installed externally on existing storey buildings where an elevator solution is needed.

The cabin is an enclosed lift chair and operation is carried out with impulse pressure from the floors and also in the cabin.

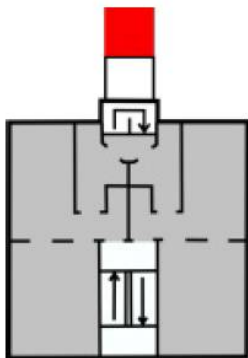
The elevator lift is designed to be able to stand outdoors and can for example be placed freestanding, up to a balcony or its with own repos.



INSTALLATION EXAMPLES



*Up to existing balconies /
hallways*



*With own repos or direct
entry to building*

WE GUARANTEE

- ✓ **HIGH QUALITY THAT PAYS OFF IN THE LONG RUN**
We have the quality, it has been proven with many years in the market as well as the lifespan of our products which makes it good business to invest in quality.
- ✓ **CUSTOMIZED SOLUTIONS**
We customize solutions to consultant's, contractor's or client's wishes to achieve the greatest satisfaction with the final product.
- ✓ **CLOSE CONTACT & COMPETENT SUPPORT**
We maintain close contact with the customer throughout the process, so that you get the right solution installed in the best way.
- ✓ **A TRUSTWORTHY PARTNER WITH EXPERIENCE**
We are the only Danish manufacturer of lifts and we believe that is because we have always delivered value for the investment.
- ✓ **SOLUTIONS THAT WITHSTAND THE TEST OF TIME**
Our lifts last for the Nordic climate so avoid problems, our products - they last for a long time.

AluLet LSCO Elevator

Low Speed Cabin Outdoor
Datasheet

TECHNICAL SPECIFICATIONS

Max. Lifting height:
30 m

Max. cargo:
400 kg

Max. speed:
0.15 m/s

Engine power:
1.5 kW

Energy requirement:
VDI 4707

Communication system:
ASI-bus

Surface:
Natural anodized aluminium

Pit depth:
70 mm (For niveaufri adgang)

Pit length and width:
Outer shaft dimension + 40 mm

Placement:
Outdoors

Min. ceiling height at lower loading point:
2150 mm

Min. ceiling height at upper loading point
2400mm (3450 mm during assembly).

Weight including shaft:
800 kg + 200 kg x lifting height [m]

Shaft clathing:
Aluminium or glass feilds (1 meter feilds)

Electrical connection:
3 x 400V + 0 + J, insured 16 Amp

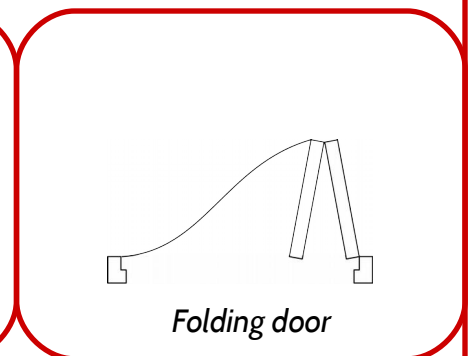
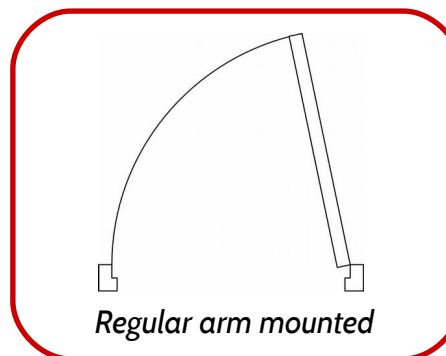
RCD:
PFI class A/B (300 mA)
(3 phase frequency range possible no N)
(recommendation of the electricity council)

Approval type:
2006/42/EF Machine Directive.
(Cert. Nr TI-10-MD-0411)

Alarm:
2-way monitored elevator alarm
(PSTN phone line or SIM card)

Safety inspection:
Min. 4 times a year (statutory)
(May vary according to notice.)

DOOR TYPES



SHAFT SIZES & TYPES

Type:	Shaft: (mm)	Cabin: (mm)	Doorway: (mm)	Auto doors:	Note:
C	1340 x 1615	1100 x 1415	900	Optional	Type II'
H	1340 x 1815	1100 x 1615	900	Optional	Type II ²
I	1340 x 2515	1100 x 2315	900	Optional	Stretcher Elevator ³

1) Cabin dimensions as a Type II elevator with closed cabin doors. 2) Cabin dimension as a Type II elevator with open cabin doors. 3) Stretcher elevator in accordance to SBI-Anv. 230.