

AluLet LSCI Elevator

Low Speed Cabin Indoor
Datasheet

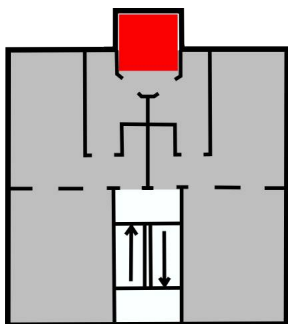
AluLet LSCI is an elevator lift in its own self-supporting shaft for installation in existing storey buildings where there is a need for an elevator solution.

The cabin is an enclosed elevator chair, operation is done by pulse pressure and it can be placed very tight installation dimensions.

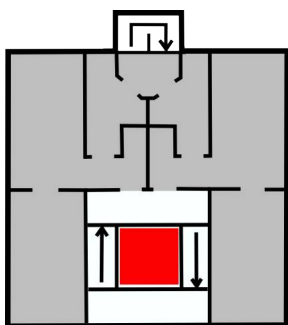
The elevator lift can for example be placed as freestanding, in the stairwell's free space or as a replacement for the rear stairs.



INSTALLATION EXAMPLES



Replacement of back stairway



In the durchsicht of the front stairs

WE GUARANTEE

- ✓ **HIGH QUALITY THAT PAYS OFF IN THE LONG RUN**
We have the quality, it has been proven with many years in the market as well as the lifespan of our products which makes it good business to invest in quality.
- ✓ **CUSTOMIZED SOLUTIONS**
We customize solutions to consultant's, contractor's or client's wishes to achieve the greatest satisfaction with the final product.
- ✓ **CLOSE CONTACT & COMPETENT SUPPORT**
We maintain close contact with the customer throughout the process, so that you get the right solution installed in the best way.
- ✓ **A TRUSTWORTHY PARTNER WITH EXPERIENCE**
We are the only Danish manufacturer of lifts and we believe that is because we have always delivered value for the investment.
- ✓ **SOLUTIONS THAT WITHSTAND THE TEST OF TIME**
Our lifts last for the Nordic climate so avoid problems, our products - they last for a long time.

AluLet LSCI Elevator

Low Speed Cabin Indoor
Datasheet

TECHNICAL SPECIFICATIONS

Max. Lifting height:
30 m

Max. cargo:
400 kg

Max. speed:
0.15 m/s

Engine power:
1.5 kW

Energy requirement:
VDI4707

Communication system:
ASI-bus

Surface:
Powder coated in RAL9010

Pit depth:
70 mm (for level-free access)

Pit length and width:
Outer shaft dimension + 40 mm

Placement:
Indoors

Min. ceiling height at lower loading point:
2150 mm

Min. ceiling height at upper loading point:
2400mm (2450 mm durring assembly).

Weight including shaft:
800 kg + 200 kg x lifting height [m]

Shaft clathing:
Aluminium or glass feilds (1 meter feilds)

Electrical connection:
3 x 400V + 0 + J, insured 25 Amp

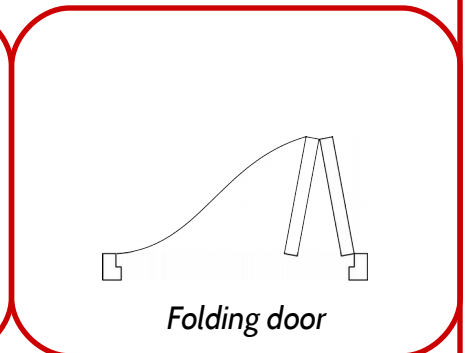
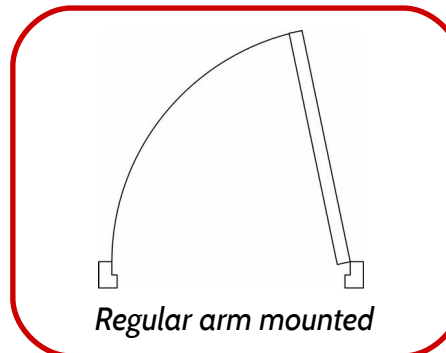
RCD:
PFI class A/B (300 mA)
(3 phase frequency range possible no N)
(recommendation of the electricity council)

Approval type:
2006/42/EF Machine Directive.
(cert.nr TI-10-MD-0411)

Alarm:
2-way monitored elevator alarm
(PSTN phone line or SIM card)

Safety inspection:
Min. 4 times a year (statutory)
(May vary according to notice.)

DOOR TYPES



SHAFT SIZES & TYPES

Type:	Shaft: (mm)	Cabin: (mm)	Doorway: (mm)	Auto doors:	Note:
A	1210 x 1615	1000 x 1400	(700) 800	Optional	Standard
B	1210 x 1246	1000 x 1025	700 (800)	Optional	
C	1310 x 1615	1100 x 1400	900	Optional	Type II ¹
D	1070 x 1615	860 x 1400	700	Optional	
E	1070 x 1246	860 x 1025	700	Optional	
F	970 x 1615	760 x 1400	600	Optional	
G	970 x 1246	760 x 1025	600	Optional	
H	1310 x 1815	1100 x 1615	900	Optional	Type II ²
I	1310 x 2515	1100 x 2315	900	Optional	Stretcher elevator ³

¹⁾ Cabin dimensions as a Type II elevator with closed cabin doors. ²⁾ Cabin dimention as a Type II elevator effective. ³⁾ Stretcher elevator according to SBI-Anv. 230.

(+45) 48 36 54 00

info@hydro-con.dk

www.hydro-con.dk