

# AluLet HSCO Elevator

## High Speed Cabin Outdoor Datasheet

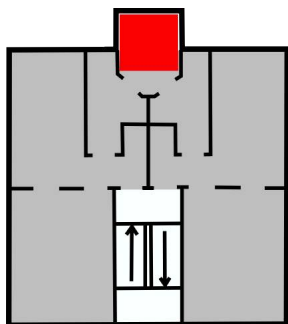
AluLet HSCO is an elevator mounted in its own self-supporting shaft for exterior installation on existing storey buildings where an elevator solution is needed.

The cabin is an enclosed lift chair and operation is carried out with impulse pressure from the floors and also in the cabin.

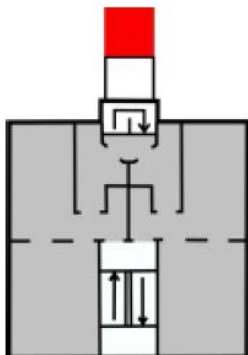
The elevator lift is designed to be able to stand outdoors and can be placed as free standing, up to a balcony or with its own repos.



### INSTALLATION EXAMPLES



*Up to existing balconies /  
hallways*



*With own repos or direct  
entry to building*

### WE GUARANTEE

- ✓ **HIGH QUALITY THAT PAYS OFF IN THE LONG RUN**  
We have the quality, it has been proven with many years in the market as well as the lifespan of our products which makes it good business to invest in quality.
- ✓ **CUSTOMIZED SOLUTIONS**  
We customize solutions to consultant's, contractor's or client's wishes to achieve the greatest satisfaction with the final product.
- ✓ **CLOSE CONTACT & COMPETENT SUPPORT**  
We maintain close contact with the customer throughout the process, so that you get the right solution installed in the best way.
- ✓ **A TRUSTWORTHY PARTNER WITH EXPERIENCE**  
We are the only Danish manufacturer of lifts and we believe that is because we have always delivered value for the investment.
- ✓ **SOLUTIONS THAT WITHSTAND THE TEST OF TIME**  
Our lifts last for the Nordic climate so avoid problems, our products - they last for a long time.

# AluLet HSCO Elevator

## High Speed Cabin Outdoor Datasheet

### TECHNICAL SPECIFICATIONS

**Max. Lifting height:**

30 m

**Max. cargo:**

630 kg

**Max. speed:**

0.63 m/s

**Engine power:**

6.1 kW

**Energy requirement:**

VDI 4707

**Communication system:**

ASI-bus

**Surface:**

Natural anodized aluminium

**Pit depth:**

1000 mm

**Pit length and width:**

Outer shaft dimension + 40 mm

**Placement:**

Outdoors

**Min. ceiling height at lower loading point:**

3600 mm (3650 mm during assembly)

**Min. ceiling height at upper loading point:**

1450 kg + 200 kg X lifting height (m)

**Weight including shaft:**

900 kg + 200 kg x lifting height [m]

**Shaft clathing:**

Aluminium or glass feilds (1 meter feilds)

**Electrical connection:**

3 x 400V + 0 + J, insured 25 Amp

**RCD:**

PFI class A/B (300 mA)

(3 phase frequency range possible no N)

(recommendation of the electricity council)

**Approval type:**

EN 81-20

**Alarm:**

2-way monitored elevator alarm

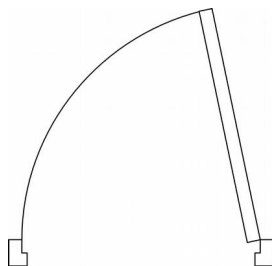
(PSTN phone line or SIM card)

**Safety inspection:**

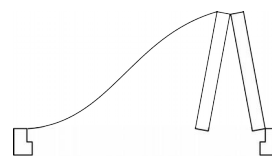
Min. 4 times a year (statutory)

(May vary according to notice.)

### DOOR TYPES



Regular arm mounted



Folding door

### SHAFT SIZES & TYPES

Type:	Shaft: (mm)	Cabin: (mm)	Doorway: (mm)	Auto doors:	Note:
C	1340 x 1615	1100 x 1400	900	Optional	Type II <sup>1</sup>
H	1340 x 1815	1100 x 1615	900	Optional	Type II <sup>2</sup>

1) Cabin dimensions as a Type II elevator with closed cabin doors. 2) cabin dimension as a Type II elevator with open cabin doors.