

# AluLet HSCI Elevator

## High Speed Cabin Indoor Datasheet

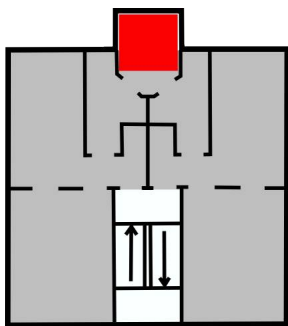
The AluLet elevator is an elevator in its own self-bearing shaft which can be installed in existing storey buildings where an elevator solution is needed.

The cabin is an enclosed elevator chair, the operation is done with impulse pressure and it can fit into very narrow installation dimensions.

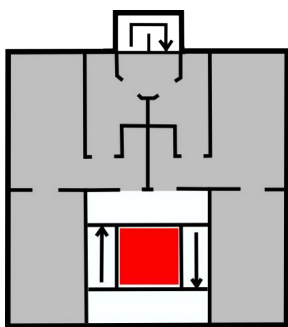
The elevator can for example be placed, freestanding, in the stairwell's free space or as a replacement for the rear staircase.



### INSTALLATION EXAMPLES



*Replacement of back stairway*



*In the durchsicht of the front stairs*

### WE GUARANTEE

- ✓ **HIGH QUALITY THAT PAYS OFF IN THE LONG RUN**  
We have the quality, it has been proven with many years in the market as well as the lifespan of our products which makes it good business to invest in quality.
- ✓ **CUSTOMIZED SOLUTIONS**  
We customize solutions to consultant's, contractor's or client's wishes to achieve the greatest satisfaction with the final product.
- ✓ **CLOSE CONTACT & COMPETENT SUPPORT**  
We maintain close contact with the customer throughout the process, so that you get the right solution installed in the best way.
- ✓ **A TRUSTWORTHY PARTNER WITH EXPERIENCE**  
We are the only Danish manufacturer of lifts and we believe that is because we have always delivered value for the investment.
- ✓ **SOLUTIONS THAT WITHSTAND THE TEST OF TIME**  
Our lifts last for the Nordic climate so avoid problems, our products - they last for a long time.

# AluLet HSCI Elevator

High Speed Cabin Indoor  
Datasheet

## TECHNICAL SPECIFICATIONS

**Max. Lifting height:**  
30 m

**Max. cargo:**  
630 kg

**Max. speed:**  
0.63 m/s

**Engine power:**  
6.0 kW

**Energy requirement:**  
VDI 4707

**Communication system:**  
ASI-bus

**Surface:**  
Powder coated in RAL9010

**Pit depth:**  
1000 mm

**Pit length and width:**  
Outer shaft dimension + 40 mm

**Placement:**  
Indoors

**Min. ceiling height at lower loading point:**  
2200 mm

**Min. ceiling height at upper loading point:**  
3600mm (3650 mm during assembly).

**Weight including shaft:**  
900 kg + 200 kg x lifting height [m]

**Shaft clathing:**  
Aluminium or glass feilds (1 meter feilds)

**Electrical connection:**  
3 x 400V + 0 + J, insured 25 Amp

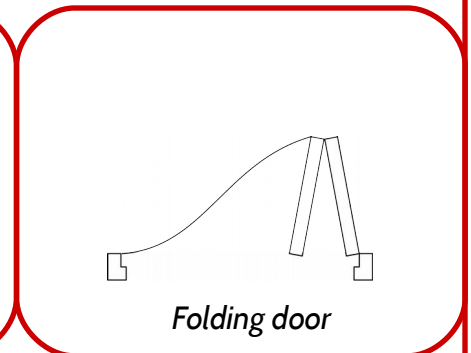
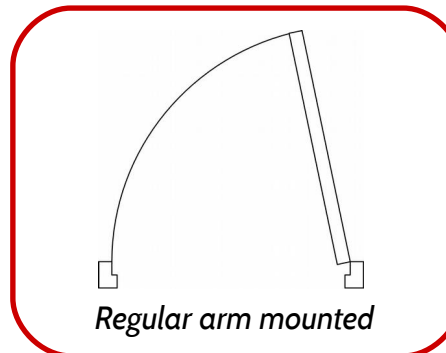
**RCD:**  
PFI class A/B (300 mA)  
(3 phase frequency range possible no N)  
(recommendation of the electricity council)

**Approval type:**  
EN 81-20

**Alarm:**  
2-way monitored elevator alarm  
(PSTN phone line or SIM card)

**Safety inspection:**  
Min. 4 times a year (statutory)  
(May vary according to notice.)

## DOOR TYPES



## SHAFT SIZES & TYPES

Type:	Shaft: (mm)	Cabin: (mm)	Doorway: (mm)	Auto doors:	Note:
A	1240 x 1615	1000 x 1400	800	Optional	Standard
B	1240 x 1246	1000 x 1025	700	Optional	
C	1340 x 1615	1100 x 1400	900	Optional	
D	1100 x 1615	860 x 1400	700	Optional	
E	1100 x 1246	860 x 1025	700	Optional	
F	1000 x 1615	760 x 1400	600	Optional	
G	1000 x 1246	760 x 1025	600	Optional	
H	1340 x 1815	1100 x 1615	900	Optional	Type II