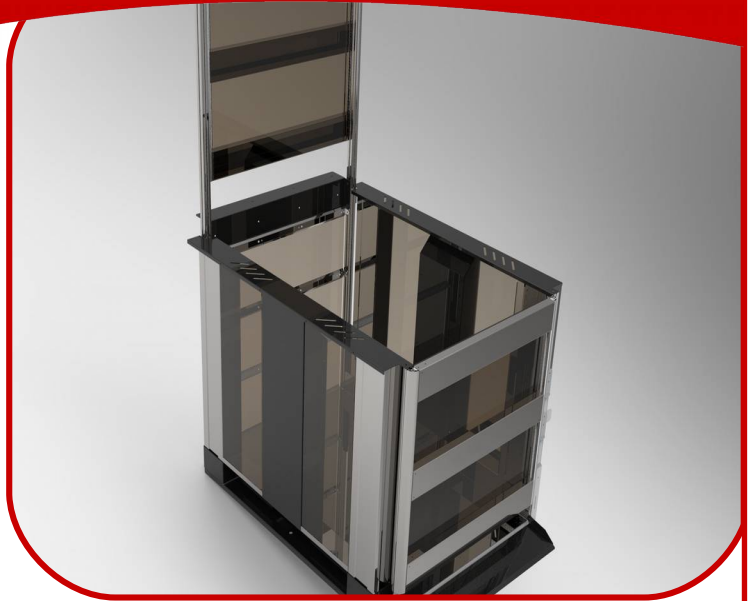


TrinLet TL350

Stairlift Datasheet

TrinLet TL350 is a robust and stable wheelchair lift for small stairways, which give the user a natural secure feeling when being transported up and down between levels. TrinLet TL350 has a lifting capacity of 350 kg.

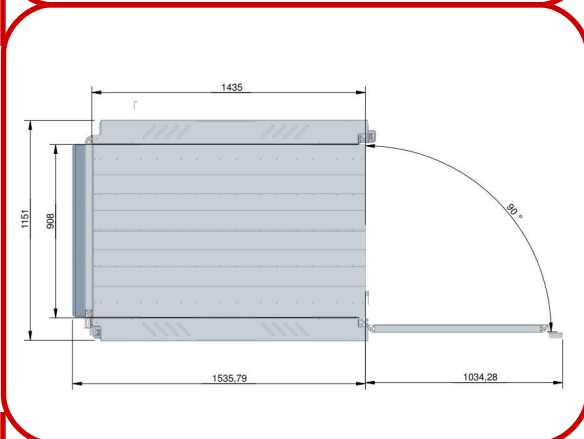
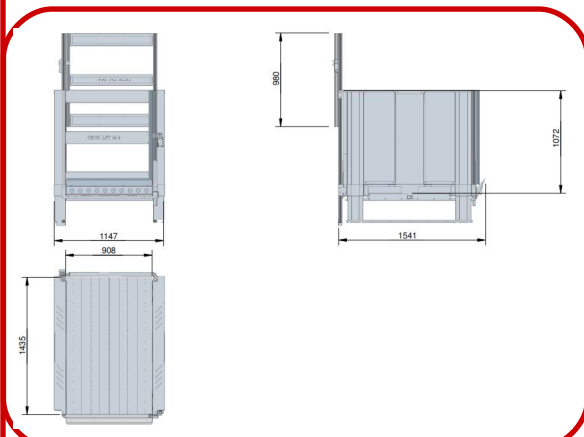
TrinLet TL350 is designed to be installed directly on the floor and does not require a pit.



The lift is suitable to be installed indoors as well as outdoors.

The lift is operated with a continual pressure hold, and is constructed in aluminium. The lift is as a standard delivered unpainted, but can be customized in a number of colors at an extra fee.

DIMENSIONS



WE GUARANTEE

- ✓ **HIGH QUALITY THAT PAYS OFF IN THE LONG RUN**
We have the quality, it has been proven with many years in the market as well as the lifespan of our products which makes it good business to invest in Quality.
- ✓ **CUSTOMIZED SOLUTIONS**
We customize solutions to consultant's, contractor's or client's wishes to achieve the greatest satisfaction with the final product.
- ✓ **CLOSE CONTACT & COMPETENT SUPPORT**
We maintain close contact with the customer throughout the process, so that you get the right solution installed in the best way.
- ✓ **A TRUSTWORTHY PARTNER WITH EXPERIENCE**
We are the only Danish manufacturer of lifts and we believe that is because we have always delivered value for the investment.
- ✓ **SOLUTIONS THAT WITHSTAND THE TEST OF TIME**
Our lifts last for the Nordic climate so avoid problems, our products - they last for a long time.

TrinLet TL350

Stairlift
Datasheet

TECHNICAL SPECIFICATIONS

Max lifting capacity:

350 kg

Platforms inner measurements:

1400 x 900 (mm)

Platforms outer measurements:

1600 x 1150 x 1100 (mm)

Safety gate measurements:

970 x 1100 (mm)

Placement:

In- or out doors

Stair height:

50 - 1500 mm

Speed:

30 mm/sek

Electrical requirements:

230V / 115V 50 / 60 Hz-10

Noise level:

52 dB(A)

Installation options:

Directly on flat surface or floor

Platform arrestor mechanisms:

Fully automatic

Platform operation:

Constant pressure hold

Floor operation:

Constant pressure hold

Legislation:

EMC Direktivet/ EMC 2014/30 EU

EN-610000-6-3

ISO 9001: 2016, ISO 3834-3, ISO 9386-1t

Approval type:

AT bekendtgørelse 461/2016

FOR IN- AND OUT DOOR INSTALLATION

